

# USER MANUAL GARO LED STRIP 230V

## TO USERS

Thank you for choosing our products. Please read carefully before use so that you can use it correctly. Please be sure to take care of this manual.

### WARNING

- It is prohibited to plug on before the led strip is fully unrolled.
- LED STRIP are not suitable for being covered with thermal insulation materials. Avoid causing a fire accident.
- Before using the LED STRIP, all connections including male&female screw connector must be connected well to prevent electric shock.
- Please do not use it when you find insulation damage to the LED STRIP or specified connection assembly.
- LED STRIP can only use the specified connection components provided by the manufacturer, and it is prohibited to connect with other LED STRIP products.
- The max. working length is 50m.
- It is prohibited to wipe LED STRIP with solvent containing aromatic hydrocarbons and chlorohydrocarbons.
- Please install it beyond the reach of humans and animals.
- Do not remove the end cap.
- The power used does not exceed the specified range value (rated voltage 220V~240V, rated frequency 50/60Hz to avoid accidents such as fire.
- During construction, please install in strict accordance with the requirements of LED STRIP installation.
- If installed improperly, it is easy to cause falling, electric shock, fire and other accidents.
- Please do not modify the LED STRIP or replace the structural components (LED module, specified connection assembly, etc.). Avoid accidents such as electric shock, fire, fall, etc.
- Once the LED STRIP is connected to the power, no operation is allowed to the LED STRIP until powered off by switch.
- This led strip light must not be used without all gaskets being in place.

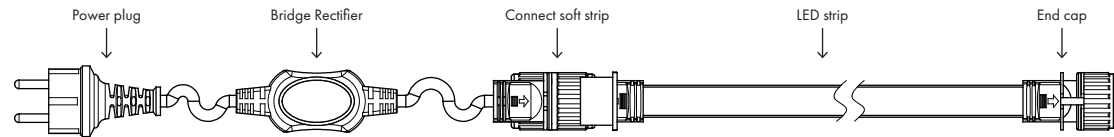
### CAUTION

- Please light the LED STRIP for testing before installation to ensure that is the suitable product. Avoiding disassembly damage to the product.
- The light source of this luminaire is not replaceable; when the light source reaches its end of life the whole luminaire shall be replaced.
- When abnormal LED STRIP or abnormal condition is found, please quickly cut off the power supply for inspection and contact the dealer. Avoid accidents such as lamp belt fall, electric shock, fire and so on.
- Do not use LED STRIP under direct sunlight, or in the humidity, vibration, water standing, and corrosive gases place.
- Ambient temperature  $-20^{\circ}\text{C} \sim +45^{\circ}\text{C}$ , make sure that the working time of the LED STRIP is no more than 8 hours a day.
- LED itself has deviations. There are difference in light color, brightness, power on the same model of LED STRIP.
- When the irradiation distance is very close, or when the irradiated surface is special, the uneven distribution of light will occur.
- For type Z attachments: The external flexible cable or cord of this luminaire cannot be replaced; if the cord is damaged, the luminaire shall be destroyed.



## PRODUCT STRUCTURE DRAWING

**!** When the led strip is still in a roll or piled into a ball, please don't light up it in case of being damaged due to heating.



## PREPARATION BEFORE INSTALLATION



**A** Bending angle: LED STRIP bends up to 70degrees.

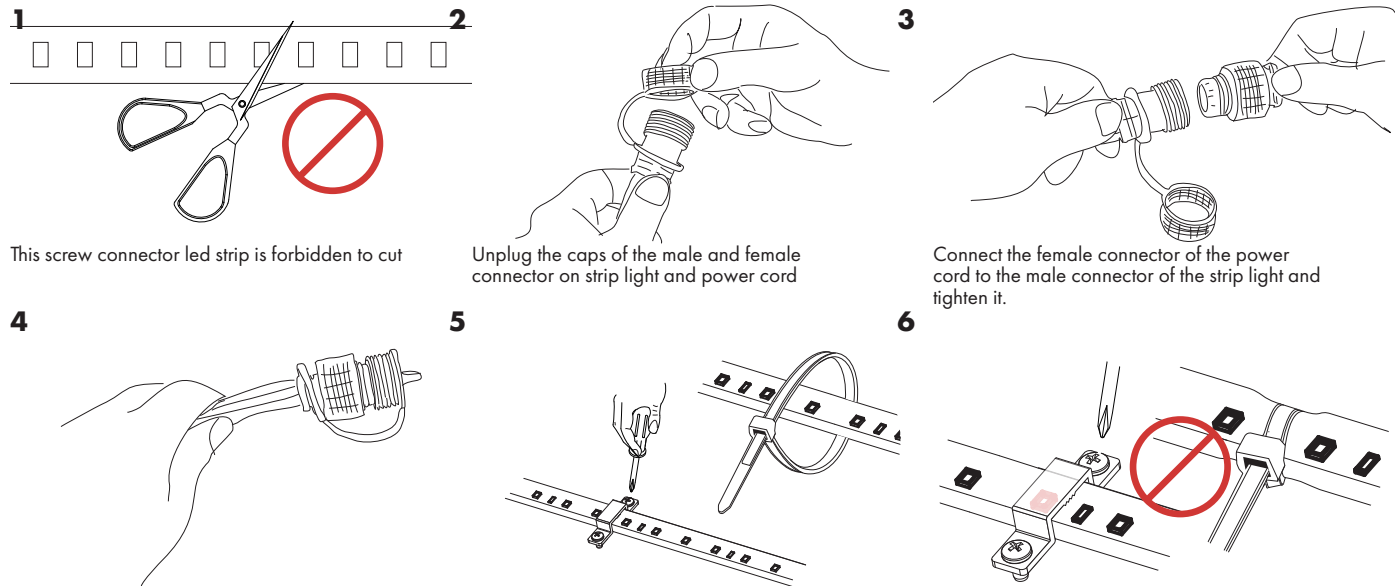
**B** Lights-mixing effect: In order to obtain the best mixing light effect, the distance of the visible illuminating surface of the LED STRIP should be greater than that of the 10cm.

**C** Connect To Power: Please be sure the input voltage is same with the led strip rated voltage, avoiding damage to body and property caused by wrong voltage! Be sure to cut off the power supply before connecting to the power outlet.

**D** Do not pull LED STRIP. Keep in a roll.

## INSTALLATION

**!** Before installation, be sure to cut off the power supply in case of electric shock.



**1** This screw connector led strip is forbidden to cut

**2** Unplug the caps of the male and female connector on strip light and power cord

**3** Connect the female connector of the power cord to the male connector of the strip light and tighten it.

**4** End cap installation: Plug the protective plug at the end of the strip light to avoid leakage.

**5** Clips installation: Fasten the LED STRIP with installation clips and screws.

**6** Make sure the clips and screws not covering any led or resistors. If wrongly installation, it might cause electric shock accident. Suggesting every meter with two clips installed.

## MAINTENANCE

- In order to use this product safely and efficiently, please clean and check it regularly (once every 6 months).
- Please clean the LED STRIP by soft cloth with neutral detergent and then wipe it with dry soft cloth. Do not touch the surface of the LED STRIP with sharp objects.
- Do not use any acidic or basic detergents, such as organic solvents or pesticides or spray, except neutral detergents to clean it. Avoid the discoloration, deterioration, strength reduction or damage of the LED STRIP.